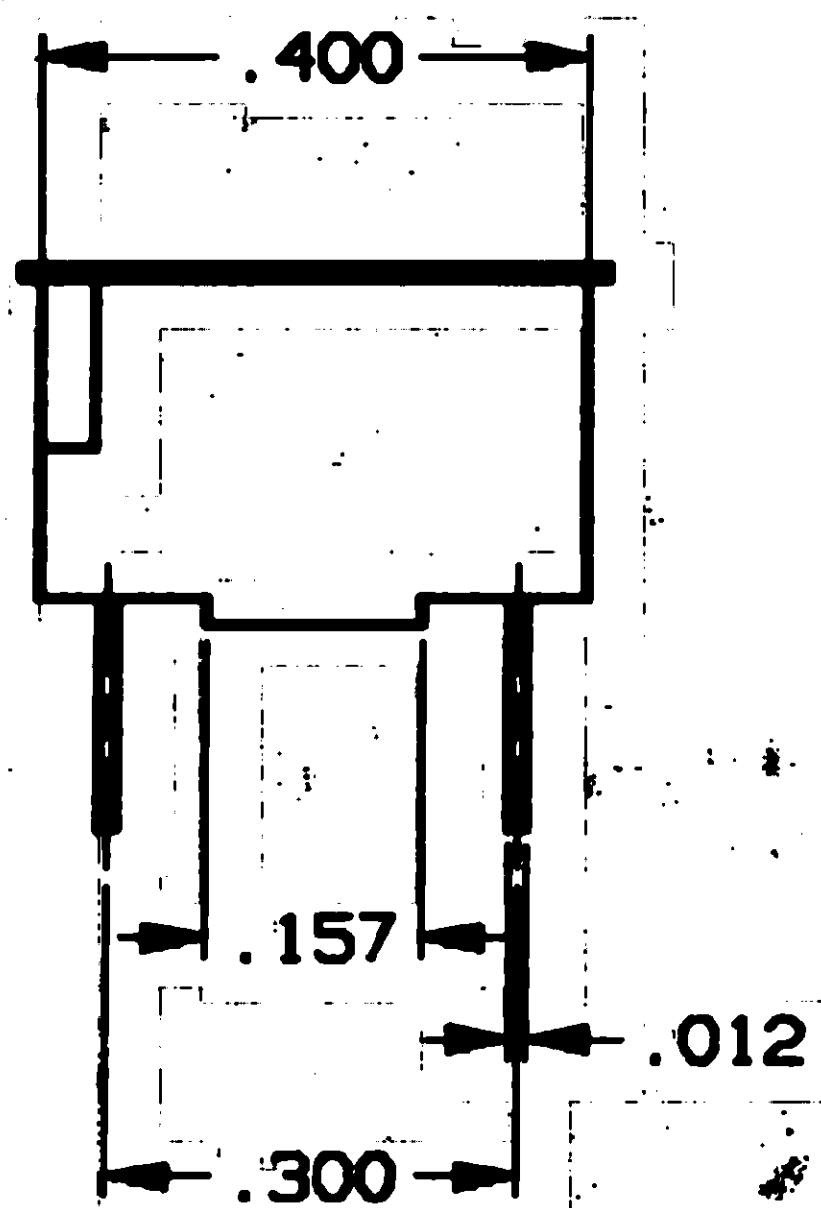
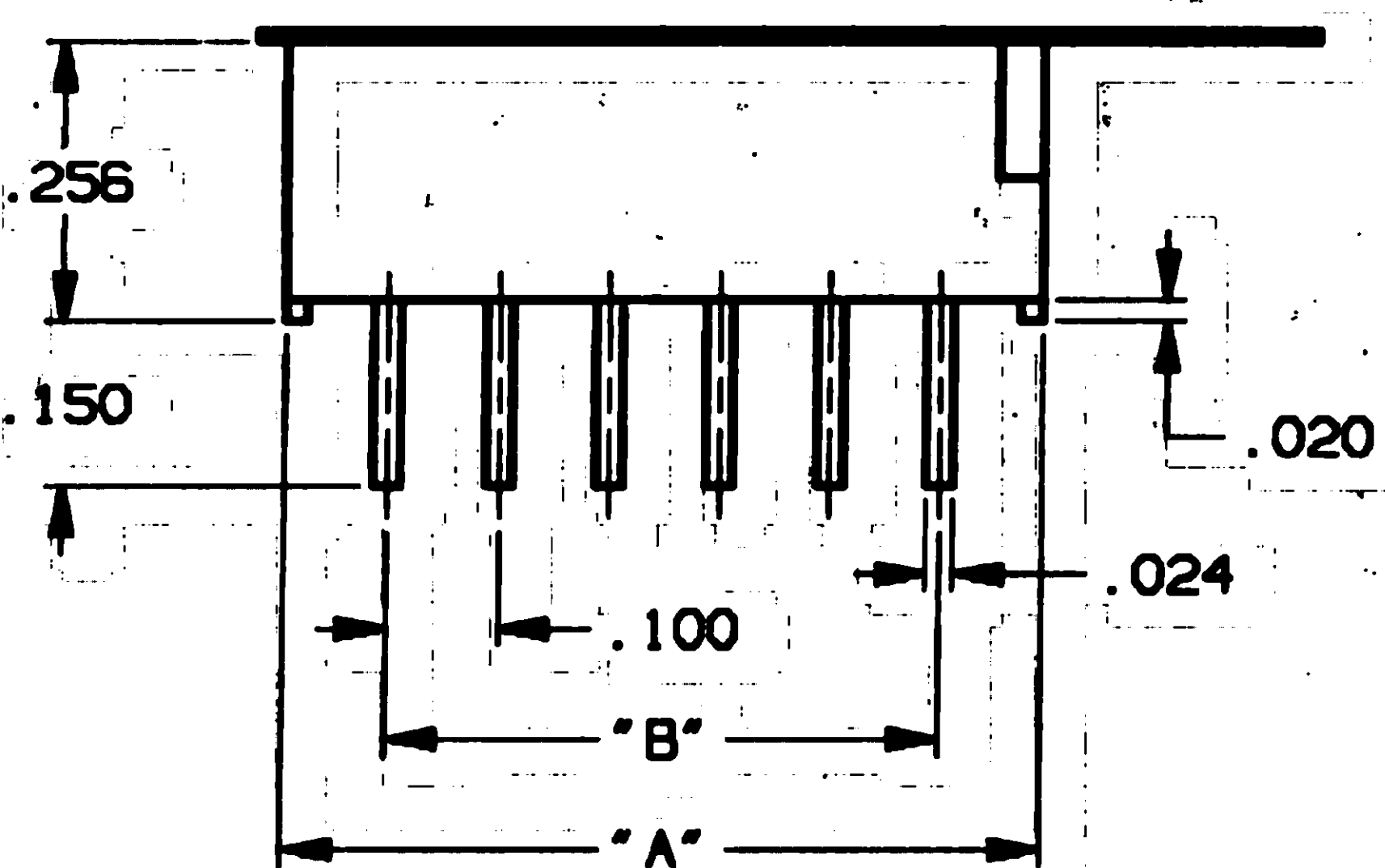
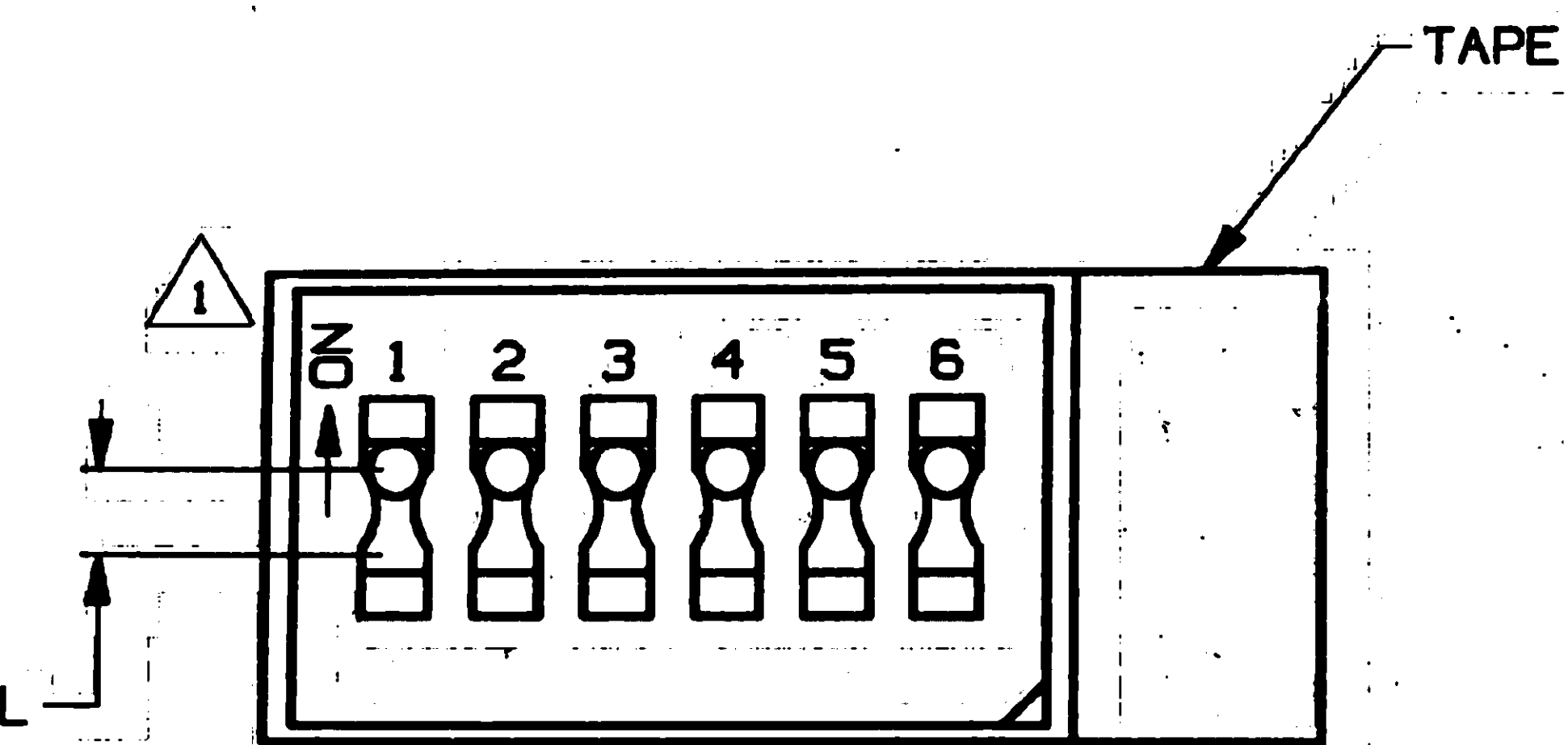


CONVERSION CHART		CONVERSION CHART	
INCH	MM	INCH	MM
.002	0.05	.890	22.61
.010	0.25	.900	22.86
.012	0.30	.998	25.35
.020	0.50	1.083	27.51

.024	0.61
.039	0.99
.079	2.00
.100	2.54
.150	3.81
.157	3.99
.197	5.00
.200	5.08
.256	6.50
.283	7.19
.300	7.62
.386	9.80
.400	10.16
.484	12.29
.500	12.70
.587	14.91
.600	15.24
.685	17.40
.700	17.78
.787	19.99
.800	20.32



MODEL	"A"	"B"
DTS1	.197	—
△2 OBSOLETE DTS2	.283	.100
DTS3	.386	.200
DTS4	.484	.300
△2 OBSOLETE DTS5	.587	.400
△2 OBSOLETE DTS6	.685	.500
DTS7	.787	.600
△2 OBSOLETE DTS8	.890	.700
DTS9	.998	.800
△2 OBSOLETE DTS10	1.083	.900

### 1 SPECIFICATIONS:

**MATERIAL:**  
 BASE: POLYESTER  
 HOUSING: POLYESTER  
 ACTUATOR: POLYAMIDE  
 MOVING CONTACT: COPPER ALLOY  
 FIXED CONTACTS/TERMINALS: COPPER ALLOY

**ELECTRICAL:**  
 CONTACT RATING: NON-SWITCHING: 100 ma @ 50 VDC  
 SWITCHING: 100 ma @ 5 VDC (TYP)  
 25 ma @ 24 VDC (MAX)  
 INITIAL CONTACT RESISTANCE: 100 MILLIOHMS MAX.  
 INSULATION RESISTANCE: 100 MEGOHMS MIN.  
 DIELECTRIC STRENGTH: 500 VDC @ SEA LEVEL.  
 LIFE EXPECTANCY: 2,000 CYCLES.

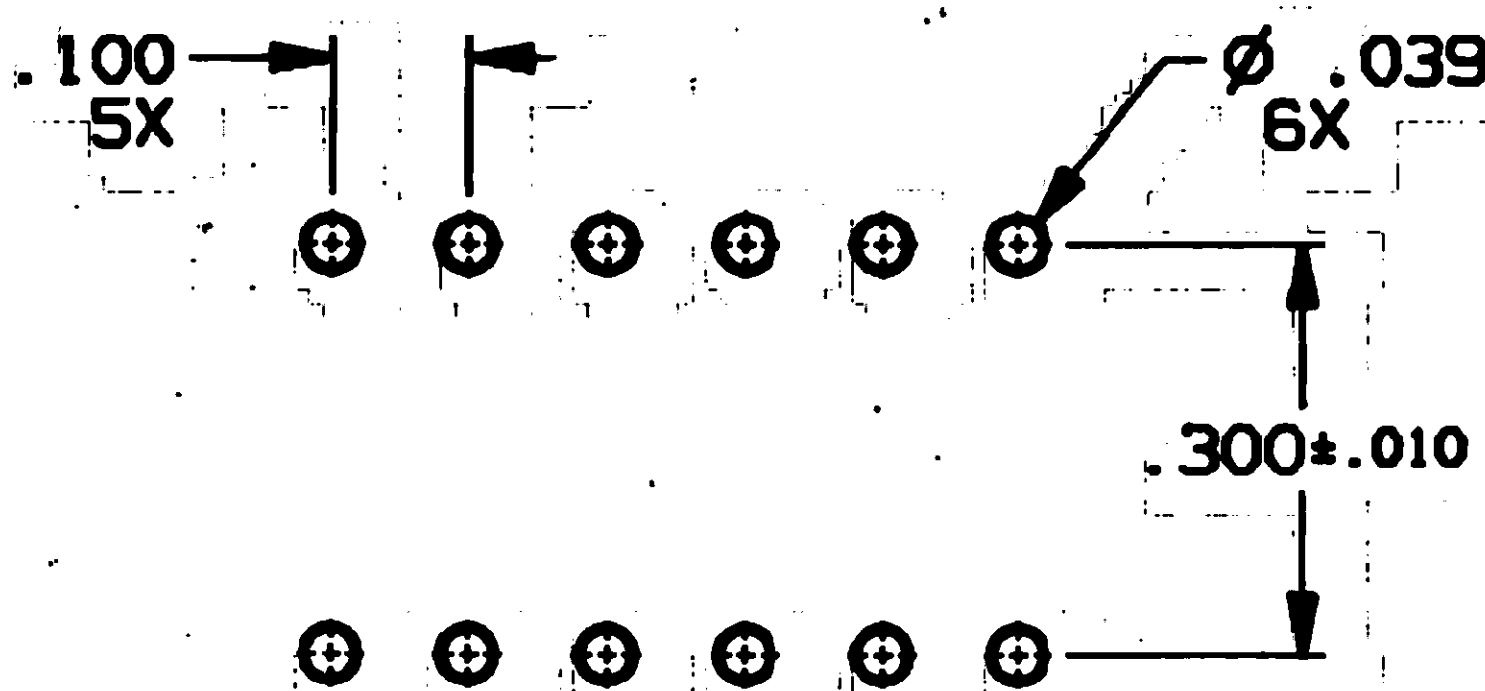
**MECHANICAL:**  
 ACTUATION FORCE: 700g MAX.  
 ACTUATION TRAVEL: .079.

**ENVIRONMENTAL:**  
 OPERATING TEMPERATURE: +14°F TO +140°F (-10°C TO +60°C)  
 STORAGE TEMPERATURE: -4°F TO +185°F (-20°C TO +85°C).

### 1 NOTES:

1. INTERPRET DRAWING PER ASME Y14.5M-1994.
2. SWITCH SHOWN IN ON POSITION.

△2 OBSOLETE PARTS: OBSOLETE CIS STREAMLINING PER D.RENAUD/D.SINISI



RECOMMENDED HOLE LAYOUT  
 TOLERANCE ±.002 UNLESS OTHERWISE NOTED

## OUTLINE DRAWING

SPECIFICATIONS ARE SUBJECT TO CHANGES WITHOUT NOTICE

THIS IS A C.A.D. GENERATED DRAWING  
 DO NOT MAKE MANUAL REVISIONS TO MASTER.



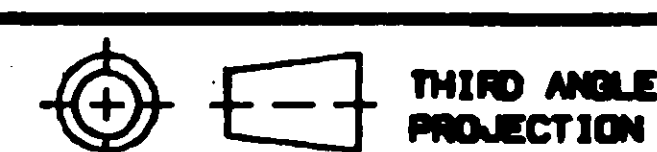
**AUGAT** INC.  
 452 JOHN DIETSCH BLVD.  
 ATTLEBORO FALLS, MASS. 02763

TITLE: **OUTLINE DRAWING**  
**DIPSWITCH**  
**DTS\*\*\***

DWG. NO. **80629** REV. **A**

PRODUCT CODE: **D13**

SCALE: **SHEET 1 OF 2**



UNLESS OTHERWISE SPECIFIED  
 DIMENSIONS ARE IN INCHES  
 DO NOT SCALE PRINT

ORIGINAL DATE OF DRAWING: **10-19-95**

TOLERANCES (EXCEPT AS NOTED)  
 ANGULAR =  
 DECIMAL .XX =  
 DECIMAL .XXX = ±.010  
 DECIMAL .XXXX =

FILE NAME: **80629S1L** DIRECTORY: **SWITCHES/DIPSWITCH**

DRAWN: **L. SILVA** DATE: **10-19-95**

MATERIAL: **SEE SPECIFICATIONS**

CHECKED: DATE:

**AUGAT CONFIDENTIAL**  
 This document contains information which is the exclusive property of Augat Inc. Distribution, reproduction or use by others is not permitted without the expressed written consent of Augat Inc.

FINISH: **SEE SPECIFICATIONS**

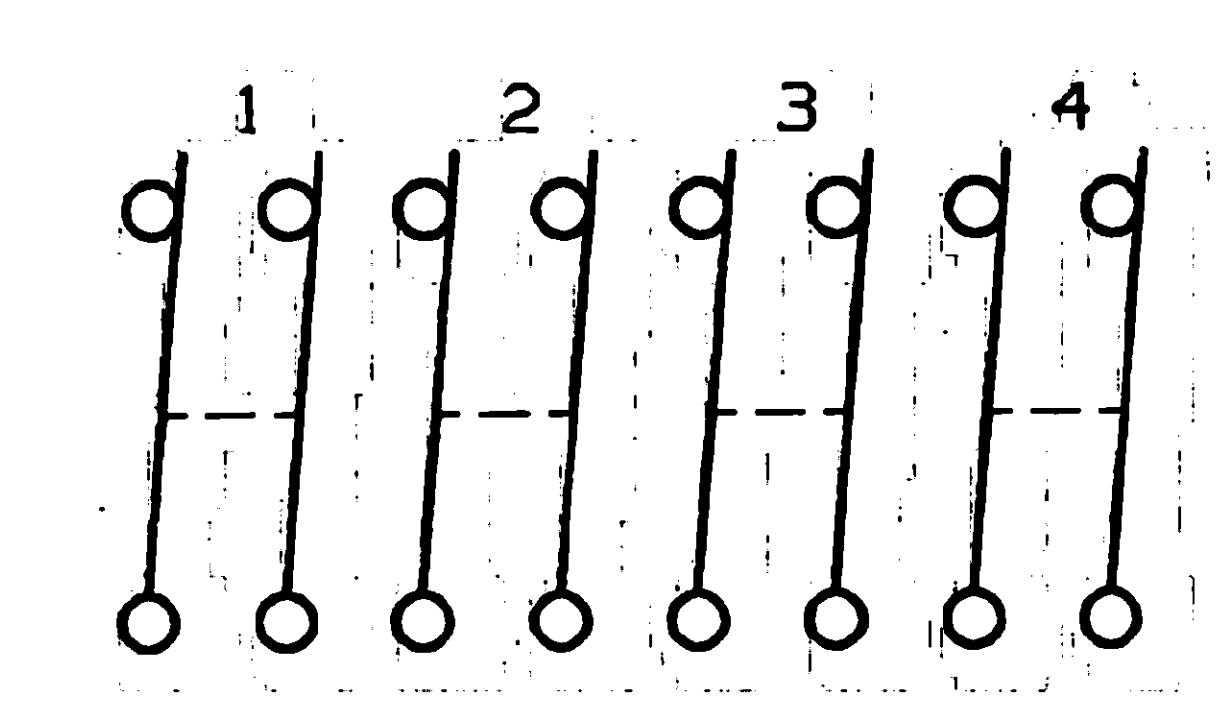
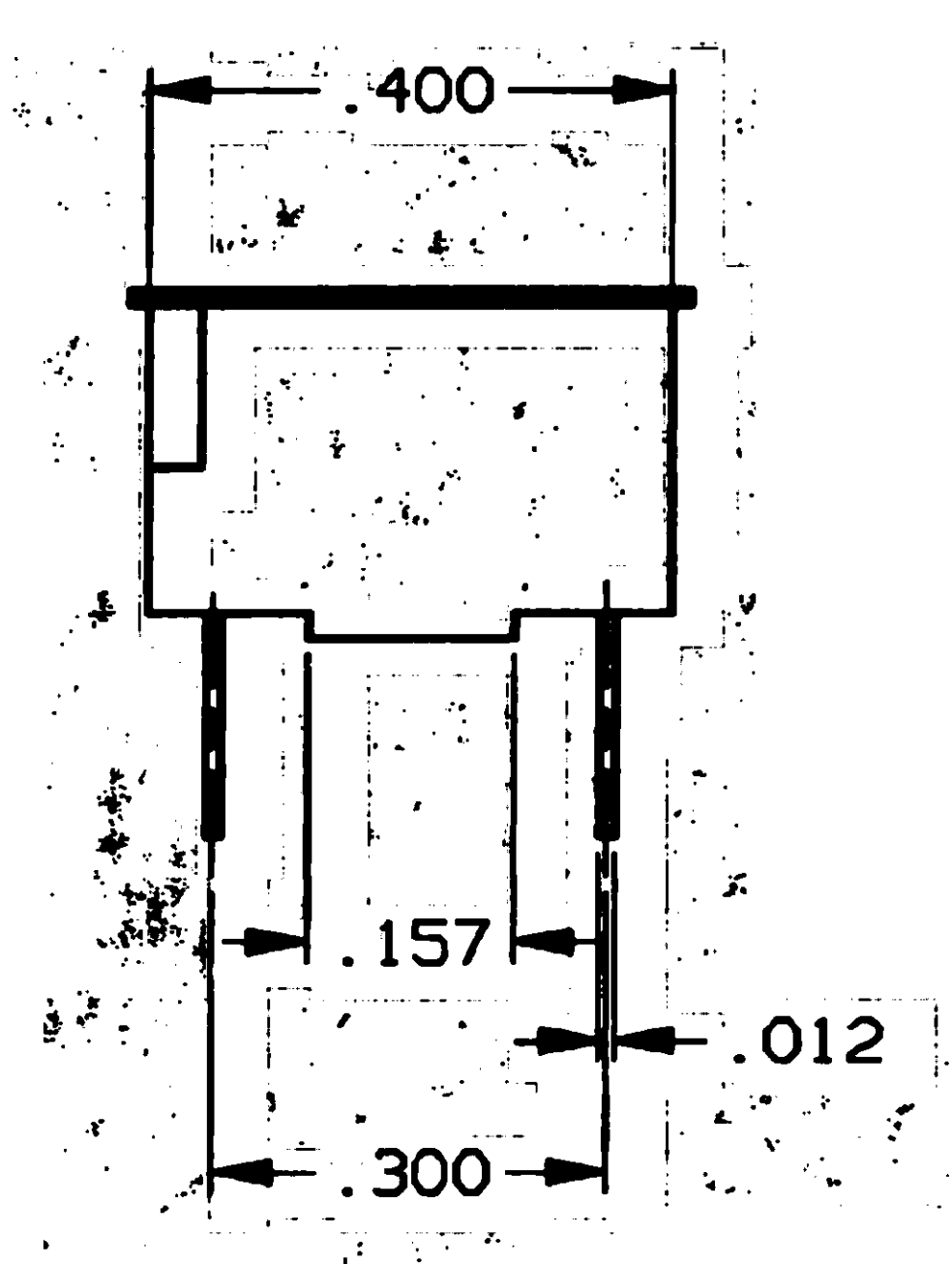
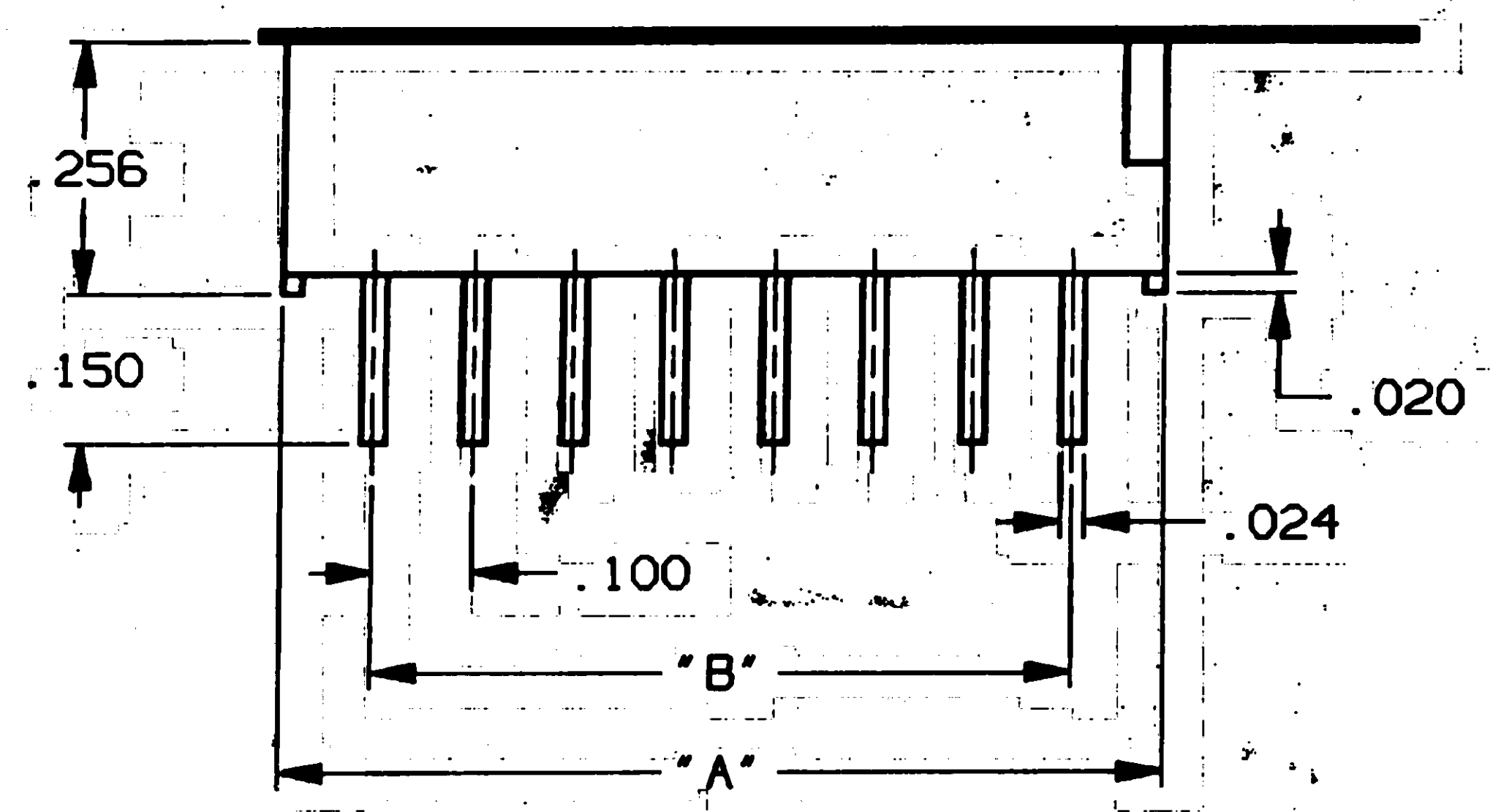
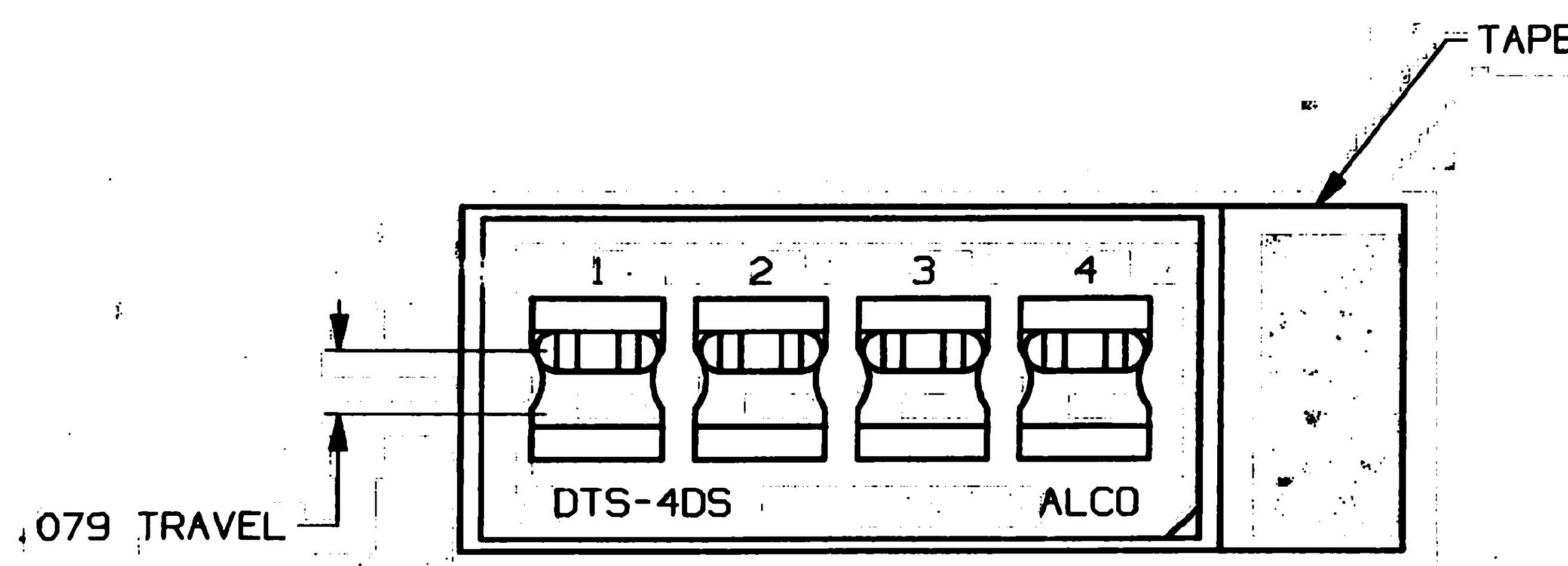
APPROVED: **W. MONTAGUE** DATE: **10-19-95**

CODE IDENT. NO. **91506**

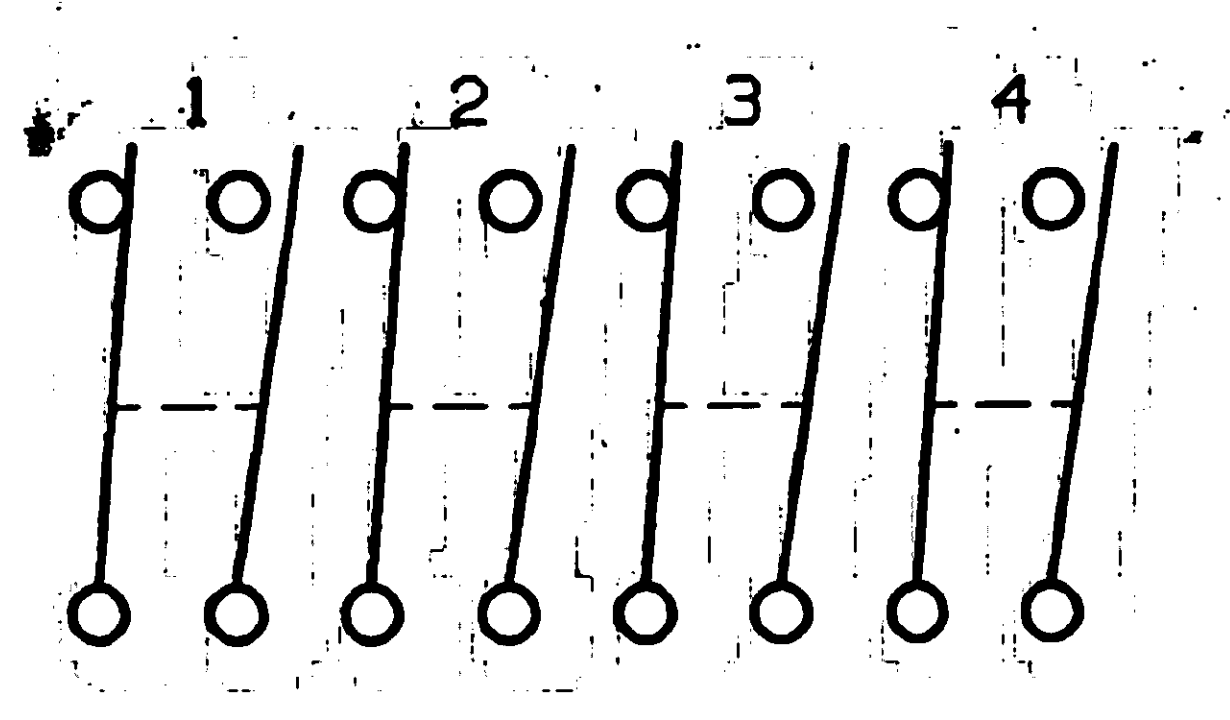
DWG. SIZE **C**

NEXT ASSY:

DATE: **10-19-95**



CIRCUIT DIAGRAM OF POSITIONS FOR DTS4DS



CIRCUIT DIAGRAM OF POSITIONS FOR DTS4SD

	MODEL	MODEL	"A"	"B"
<b>2</b>	<b>OBSOLETE</b>	<del>DTS1DS</del>	<del>.283</del>	<del>.100</del>
<b>1</b>	<del>DTS2DS</del>	DTS2SD	.484	.300
<b>1</b>	<del>DTS3DS</del>	DTS3SD	.685	.500
<b>1</b>	<del>DTS4DS</del>	DTS4SD	.890	.700
<b>1</b>	<del>DTS5DS</del>	DTS5SD	1.083	.900

**OUTLINE DRAWING**  
SPECIFICATIONS ARE SUBJECT TO CHANGES WITHOUT NOTICE

<p>THIRD ANGLE PROJECTION</p>	UNLESS OTHERWISE SPECIFIED DIMENSIONS ARE IN INCHES DO NOT SCALE PRINT		ORIGINAL DATE OF DRAWING: 10-19-95
	TOLERANCES (EXCEPT AS NOTED) ANGULAR = DECIMAL .XX = DECIMAL .XXX = ±.010 DECIMAL .XXXX =	FILE NAME: B0629S2L DIRECTORY: SWITCHES/DIPSWITCH	DRAWN: L. SILVA DATE: 10-19-95
AUGAT CONFIDENTIAL This document contains information which is the exclusive property of Augat Inc. Distribution, reproduction or use by others is not permitted without the expressed written consent of Augat Inc.	MATERIAL: SEE SHEET 1	CHECKED: [Signature] DATE: 10-19-95	TITLE: <b>OUTLINE DRAWING</b> <b>DIPSWITCH</b> <b>DTS***</b>
	FINISH: SEE SHEET 1	APPROVED: [Signature] DATE: 10-19-95	CODE IDENT. NO.: 91506 DWG. SIZE: C
		NEXT ASSY:	PRODUCT CODE: D13 SCALE: SHEET 2 OF 2

THIS IS A C.A.D. GENERATED DRAWING. DO NOT MAKE MANUAL REVISIONS TO MASTER.

**AUGAT** 452 JOHN DIETZSCH BLVD. ATTLEBORO FALLS, MASS. 02763 INC.

TITLE: **OUTLINE DRAWING**  
**DIPSWITCH**  
**DTS\*\*\***

DWG. NO.: 80629  
REV. A

PRODUCT CODE: D13  
SCALE: SHEET 2 OF 2

REVISIONS

SEE SHEET #1